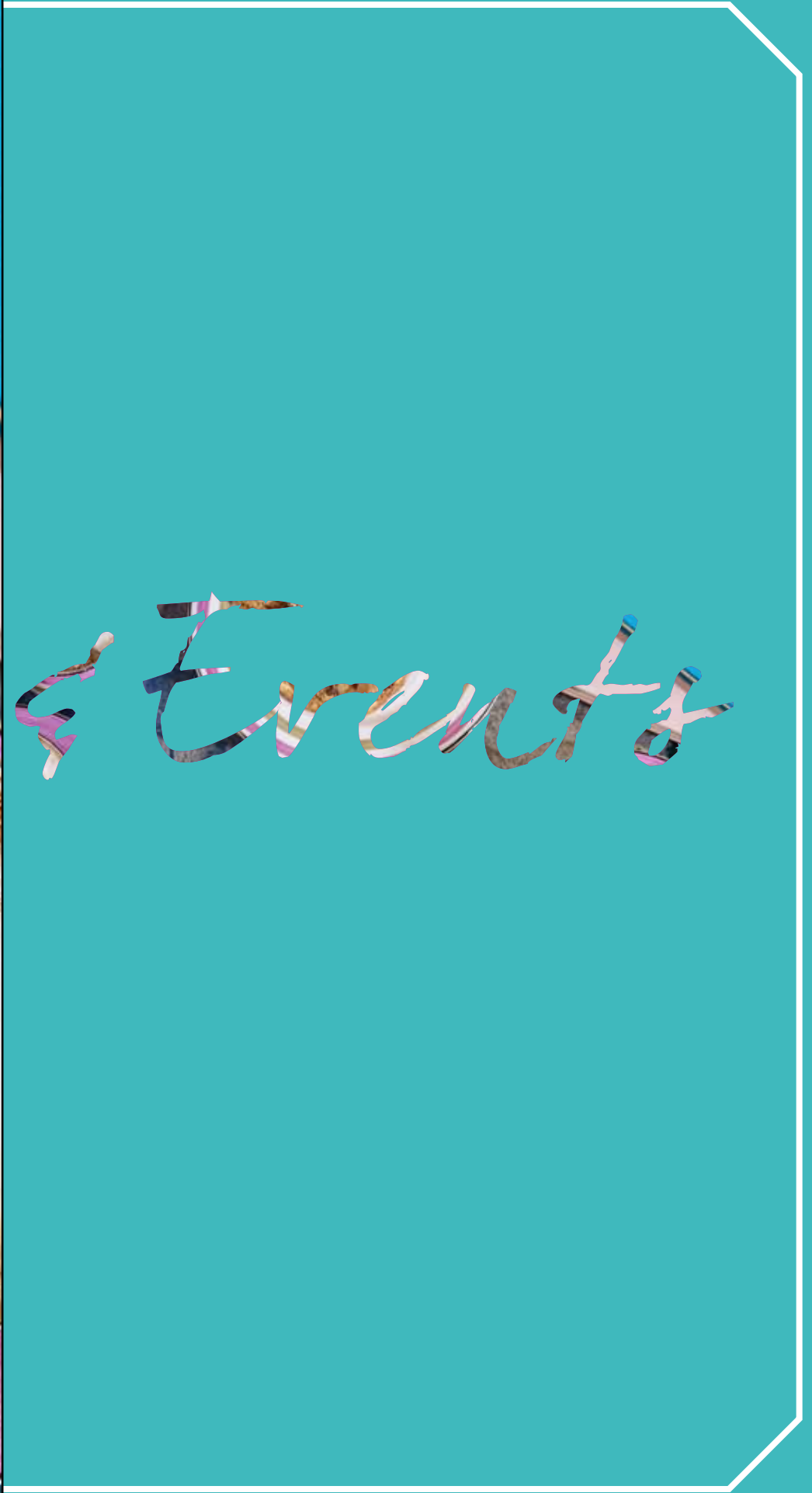


AH
ALEXANDER HOTELS
COLLECTION

Meetings & Events



Creative Spaces
at
THE ALEXANDER HOTEL
Collection

~

From the historic Tithe Barn at Great Fosters, to the sleek Pavilion of Rowhill Grange, our collection of historic country house hotels feature all manner of creative, inspiring and luxurious spaces.

~

Established for over twenty years, we are proud to have created a legacy of superb events delivered by our team of exceptional event professionals.

~



Alexander House

TURNER'S HILL, EAST GRINSTEAD, RH10 4QD | WWW.ALEXANDERHOUSE.CO.UK

A transformed Jacobean mansion, Alexander House was once the residence of Percy & Mary Shelley. Today, our five-red star property is comprised of fifty eight rooms & suites, seven private hire spaces, a champagne bar, several terraces and courtyards and a Utopia spa. Our largest suite, named after the Shelleys, holds 90 guests and can be combined with the Wakehurst for larger events of up to 130. More intimate occasions can enjoy such beautiful drawing rooms as the Asquith & Churchill.

Set in 120 acres of gardens, Alexander House is just 20 minutes from Gatwick Airport and 30 minutes from London Victoria.



	Shelley	Wakehurst	Asquith	Churchill	Chalfont	The Boardroom	AG's
Boardroom	40	26	8	14	10	10	30
Private Dining	90	40	10	16	14	10	40
Cabaret	56	24	~	~	~	~	16
U-Shape	40	24	~	12	~	~	16
Theatre	100	40	~	16	~	~	40



CLOCKWISE FROM LEFT: *The Asquith Suite, a Garden Suite bedroom, the original manor and gardens, private hot tubs at Utopia, Champagne bar, Shelley Suite*



ASQUITH SUITE

Perfectly formed traditional suite with views of the south gardens.



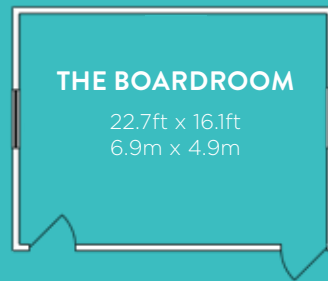
ASQUITH SUITE
20.1ft x 13.5ft
6.1m x 4.1m

BOARDROOM
up to 8 delegates

PRIVATE DINING
up to 10 guests

THE BOARDROOM

Fully air-conditioned modern boardroom offering a comfortable environment for high power executive meetings.

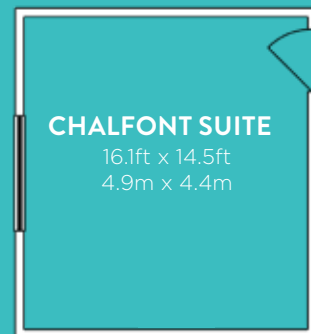


THE BOARDROOM
22.7ft x 16.1ft
6.9m x 4.9m

BOARDROOM
up to 10 delegates

CHALFONT SUITE

Intimate suite that retains elegant 17th Century oak panelling.



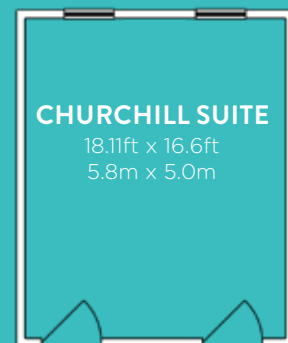
CHALFONT SUITE
16.1ft x 14.5ft
4.9m x 4.4m

BOARDROOM
up to 10 delegates

PRIVATE DINING
up to 12 guests

CHURCHILL SUITE

Luxuriously appointed south facing room that lends itself to the modern business meeting but also suits a special occasion or business supper.



CHURCHILL SUITE
18.11ft x 16.6ft
5.8m x 5.0m

BOARDROOM
up to 14 delegates

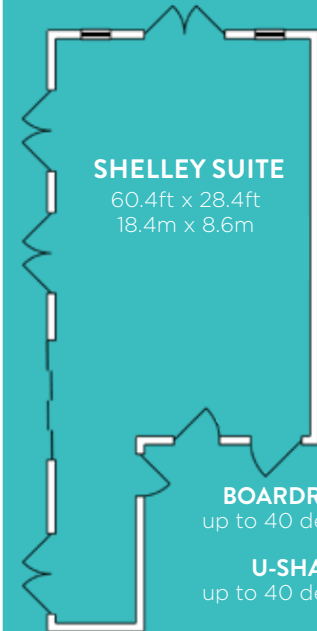
U-SHAPE
up to 12 delegates

THEATRE STYLE
up to 20 delegates

PRIVATE DINING
up to 16 guests

SHELLEY SUITE

Purpose built suite equipped with modern technology, stage setting or dance floor, air-conditioning and direct access to a private garden.



SHELLEY SUITE
60.4ft x 28.4ft
18.4m x 8.6m

BOARDROOM
up to 40 delegates

U-SHAPE
up to 40 delegates

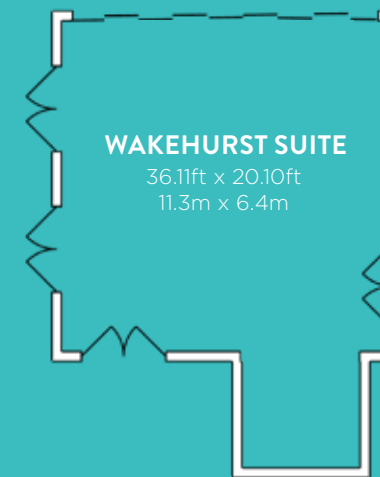
CABARET
up to 56 delegates

THEATRE STYLE
up to 120 delegates

PRIVATE DINING
up to 90 guests

WAKEHURST SUITE

Syndicate area or private meeting room with direct access to a discreet terrace.



WAKEHURST SUITE
36.11ft x 20.10ft
11.3m x 6.4m

BOARDROOM
up to 26 delegates

U-SHAPE
up to 24 delegates

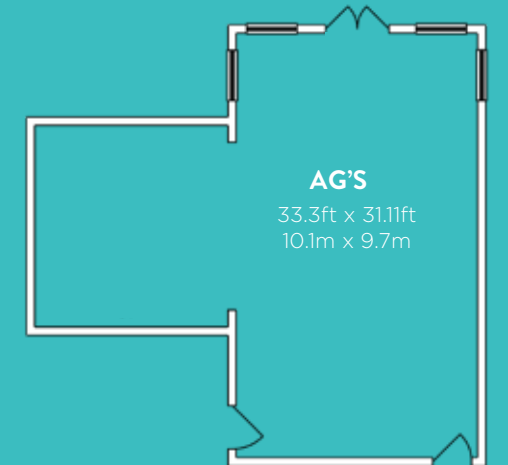
CABARET
up to 24 delegates

THEATRE STYLE
up to 40 delegates

PRIVATE DINING
up to 40 guests

AG's

Elegant decor and tastefully appointed furnishings suited to a variety of room layouts.



AG'S
33.3ft x 31.1ft
10.1m x 9.7m

BOARDROOM
up to 20 delegates

U-SHAPE
up to 14 delegates

CABARET
up to 15 delegates

THEATRE STYLE
up to 30 delegates

PRIVATE DINING
up to 40 guests

Team Building

With 120 acres of parkland at your disposal along with our little black book of suppliers, we have plenty of great team building solutions. From ice breakers to creative exercises, learning new skills as well as more traditional team building activities, there's something for every team to enjoy. Here are a few of our favourites...



You'd be quackers not to give duck herding in the grounds a go...



An afternoon of croquet on the lawn perhaps? Why not accompany it with cream tea & Pimms... a lovely treat. There are plenty of other lawn games too...



A morning of clay shooting blows away the cobwebs, with flasks of coffee & treats



The primordial power of gathering around fire - with a tot of something or two!



Need we say more? We love this snap of a team enjoying a wine tasting, which you can take as seriously (or not) as you please. We've plenty of grapes to try and our sommeliers know their stuff but can make a tasting great fun too.



A guided wellness walk through our woodland can be great to help bring stretched teams together. Take a deep breath, recalibrate and soak up the countryside.

We've plenty more ideas too, from treasure hunts to bike rides, knock out tennis championships to Nyetimber tastings. For any of these, or perhaps something else you have in mind, just contact our events team: ahsales@alexanderhotels.com

Great Fosters

STROUDE ROAD, EGHAM, NR WINDSOR TW20 9UR | WWW.GREATFOSTERS.CO.UK

One of the most important historic buildings in the UK, Great Fosters is shrouded in Tudor history. Originally the Royal Hunting Lodge of Henry VIII and most likely where he courted Anne Boleyn, which is evidenced in her personal chambers at Great Fosters today. Of course you cannot overlook the personal crest of Queen Elizabeth I on the front of the property too. Today, Great Fosters is a magnificent boutique hotel with acres of glorious parterres gardens, fifty five rooms & suites, seven private hire spaces, a cocktail bar, our painted bar, several terraces with pizza ovens and much more - not least the Saxon moat and grassed amphitheatre. Great Fosters is mere moments from London Heathrow and 30 minutes from London Waterloo.

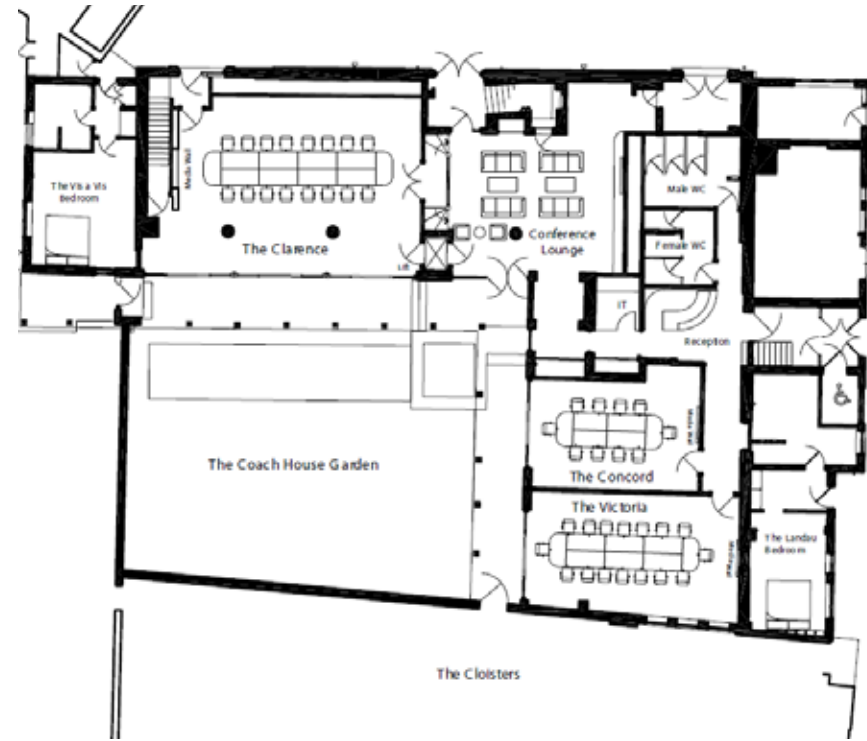


	Tithe Barn	Orangery	Mowbray	Mandeville	Clarence	Victoria	Concord
Boardroom	40	40	20	8	22	16	10
Private Dining	180	80	24	8	~	~	~
Cabaret	42	48	15	~	~	~	~
U-Shape	40	40	20	~	22	16	10
Theatre	120	120	30	~	30	~	~

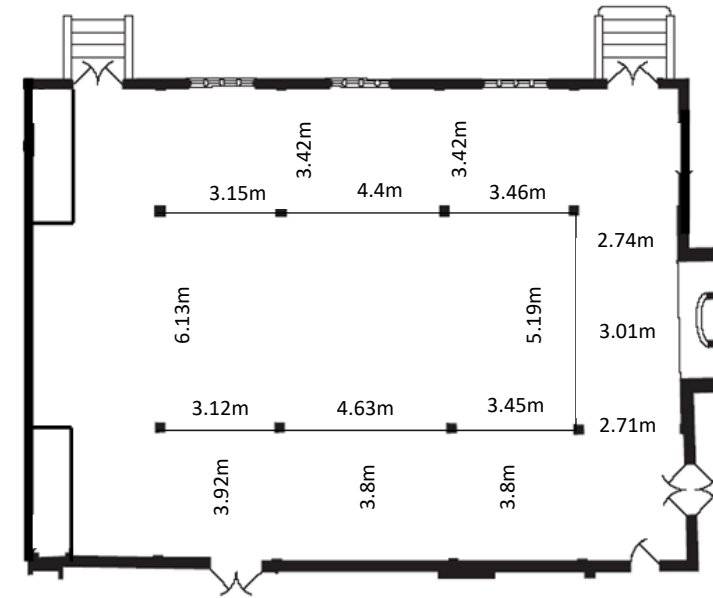


CLOCKWISE FROM TOP LEFT: *The Tithe Barn, the Anne Boleyn drawing room, Great Fosters frontage, the Clarence, the Parterres Gardens, the Mowbray*

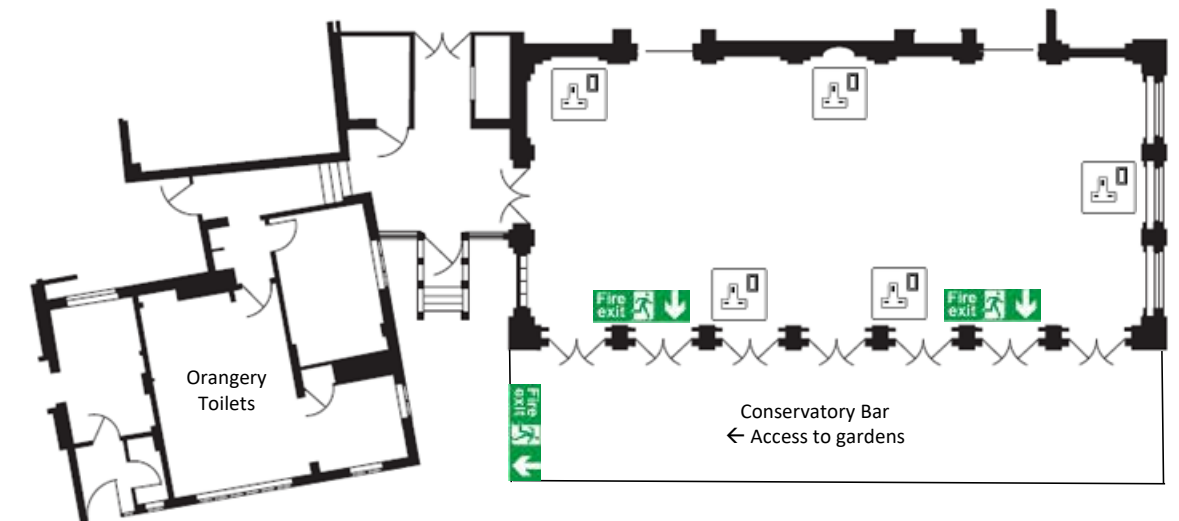
THE COACH HOUSE



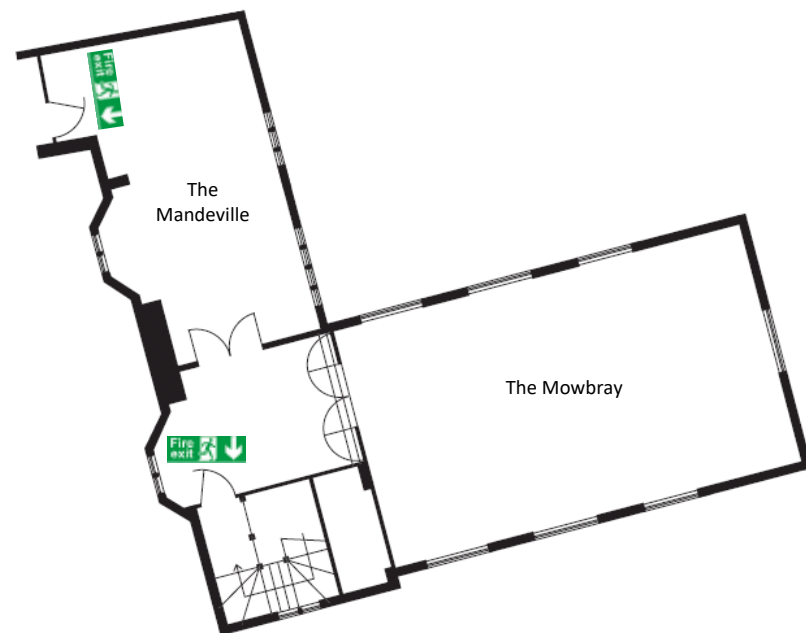
TITHE BARN EVENT SPACE



THE ORANGERY



THE MOWBRAY & MANDEVILLE



Team Building

Set in 55 acres of the most extraordinary gardens and grounds, and with our little black book of suppliers, we have plenty of great team building solutions. From ice breakers to creative exercises, learning new skills as well as more traditional team building activities, there's something for every team to enjoy. Here are a few of our favourites...



You'd be quackers not to give duck herding in the grounds a go...



An afternoon of croquet on the lawn perhaps? Why not accompany it with cream tea & Pimms... a lovely treat. There are plenty of other lawn games too...



A morning of clay shooting blows away the cobwebs, with flasks of coffee & treats



Meet the bees! Our expert beekeeper can give you a tour of hives, followed by a honey tasting and little insight into the world of the amber nectar...



The primordial power of gathering around fire - with a tot of something or two!



Need we say more? We love this snap of a team enjoying a wine tasting, which you can take as seriously (or not) as you please. We've plenty of grapes to try and our sommeliers know their stuff but can make a tasting great fun too.



A guided wellness walk through our woodland can be great to help bring stretched teams together. Take a deep breath, recalibrate and soak up the countryside.

We've plenty more ideas too, from treasure hunts to bike rides, knock out tennis championships to Nyetimber tastings. For any of these, or perhaps something else you have in mind, just contact our events team: gfsales@alexanderhotels.com

Rowhill Grange

TOP DARTFORD ROAD, DARTFORD, KENT, BR8 7SQ | WWW.ROWHILLGRANGE.CO.UK

Rowhill Grange is undeniably beautiful - originally built as a holiday home for Alice Alexander over 150 years ago, it still bears a New England charm and certainly evokes the sense of escape. With thirty eight rooms & suites, six meeting rooms and fifteen acres of gardens it perfectly caters for smaller and larger groups alike. The Pavilion and The Clockhouse are both separate to the Main House and offer exclusive use options. Additionally, Rowhill Grange has several terraces overlooking the gardens, Elements bar & lounge and the rosetted restaurant, RGs. Rowhill Grange is just 12 miles from London City Airport, and 30 minutes from London Victoria to Swanley Station, 2 miles from Rowhill.



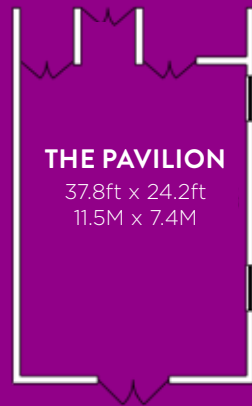
	Pavilion	Hub	Wicket	Drawing Room	Clockhouse Suite	Cottage Suite
Boardroom	24	8	18	14	34	26
Private Dining	~	~	~	16	130	32
Cabaret	30	~	~	~	40	15
U-Shape	22	10	12	15	30	26
Theatre	60	~	20	20	160	64

CLOCKWISE FROM TOP LEFT: A Master Suite, RG's Restaurant, the Gardens, The Pavilion meeting room, private dinner in The Drawing Room and the indoor pool at Utopia Spa.



THE PAVILION

CONFERENCE CENTRE
 Stylishly designed intelligent 'think space' environment with modern technology, mood lighting, reception area and private terrace.

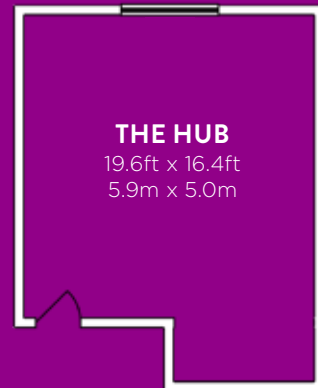


THE PAVILION
 37.8ft x 24.2ft
 11.5M x 7.4M

- BOARDROOM**
up to 24 delegates
- U-SHAPE WITH TABLES**
up to 22 delegates
- U-SHAPE WITHOUT TABLES**
up to 26 delegates
- CABARET**
up to 30 delegates
- THEATRE STYLE**
up to 60 delegates

THE HUB

Located on the upper floor of The Pavilion, The Hub is an elegant meeting space appropriate for cosy gatherings.



THE HUB
 19.6ft x 16.4ft
 5.9m x 5.0m

- BOARDROOM**
up to 8 delegates
- U-SHAPE WITH TABLES**
up to 10 delegates
- U-SHAPE WITHOUT TABLES**
up to 12 delegates

THE WICKET

Adjacent to The Hub offering an intimate atmosphere and sophisticated setting.

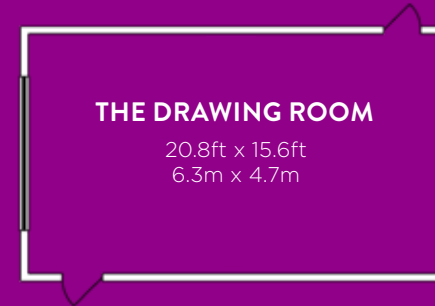


THE WICKET
 34.1ft x 16.4ft
 10.4m x 5.0m

- BOARDROOM**
up to 18 delegates
- U-SHAPE WITH TABLES**
up to 12 delegates
- U-SHAPE WITHOUT TABLES**
up to 14 delegates
- THEATRE STYLE**
up to 20 delegates

THE DRAWING ROOM

Oak-panelled boardroom that artfully blends 18th century charm with modern amenities and garden views.

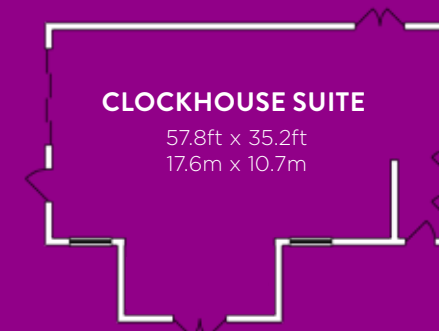


THE DRAWING ROOM
 20.8ft x 15.6ft
 6.3m x 4.7m

- BOARDROOM**
up to 14 delegates
- U-SHAPE WITH TABLES**
up to 15 delegates
- U-SHAPE WITHOUT TABLES**
up to 20 delegates
- THEATRE STYLE**
up to 20 delegates

CLOCKHOUSE SUITE

A gracious setting with plenty of natural character. Equipped with modern technology, stage setting or dance floor, air conditioning, private bar and courtyard.

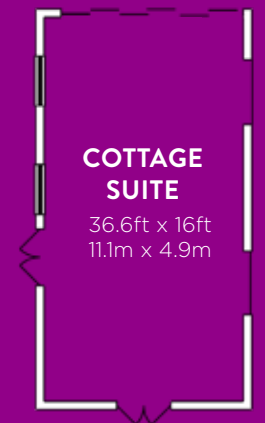


CLOCKHOUSE SUITE
 57.8ft x 35.2ft
 17.6m x 10.7m

- BOARDROOM**
up to 34 delegates
- U-SHAPE WITH TABLES**
up to 30 delegates
- U-SHAPE WITHOUT TABLES**
up to 36 delegates
- CABARET**
up to 40 delegates
- THEATRE STYLE**
up to 160 delegates
- PRIVATE DINING**
up to 150 guests

COTTAGE SUITE

Named accordingly because of its cosy fireplace and warm atmosphere.



COTTAGE SUITE
 36.6ft x 16ft
 11.1m x 4.9m

- BOARDROOM**
up to 26 delegates
- U-SHAPE WITH TABLES**
up to 23 delegates
- U-SHAPE WITHOUT TABLES**
up to 26 delegates
- CABARET**
up to 15 delegates
- THEATRE STYLE**
up to 64 delegates

Team Building

With 15 acres of gardens at your disposal along with our little black book of suppliers, we have plenty of great team building solutions. From ice breakers to creative exercises, learning new skills as well as more traditional team building activities, there's something for every team to enjoy. Here are a few of our favourites...



You'd be quackers not to give duck herding in the grounds a go...



An afternoon of croquet on the lawn perhaps? Why not accompany it with cream tea & Pimms... a lovely treat. There are plenty of other lawn games too...



A morning of clay shooting blows away the cobwebs, with flasks of coffee & treats



The primordial power of gathering around fire - with a tot of something or two!



Need we say more? We love this snap of a team enjoying a wine tasting, which you can take as seriously (or not) as you please. We've plenty of grapes to try and our sommeliers know their stuff but can make a tasting great fun too.



How about a 'pretty party' in our bespoke beauty parlour, 'The Thatchers'. Buff & polish nails, sip some fizz and relax - the perfect reward for a team.

We've plenty more ideas too, from treasure hunts to bike rides to Nyetimber tastings. For any of these, or perhaps something else you have in mind, just contact our events team: rgsales@alexanderhotels.com



THE SOUTH DRAWING ROOM
Alexander House

Barnett Hill

BLACKHEATH LANE, NR GUILDFORD, GU5 0RF | WWW.BARNETHILLHOTEL.CO.UK

Barnett Hill is truly a treasure of a property tucked away behind a sweeping driveway in the Surrey Hills. Its rich history began with being a private residence for the Thomas Cook family, before going on to become a Red Cross Hospital during WW2. Barnett Hill today is a beautiful design hotel with fifty six rooms & suites, nine private hire spaces, a series of terraces which look upon the twenty-six acres of grounds and a beautiful rosetted restaurant, The Oak Room and the 1905 cocktail bar. Barnett Hill can accommodate up to 100 guests and makes a perfect option for exclusive hire. Located 26 miles from Heathrow and 37 from Gatwick, Barnett Hill is easily reachable with connections via Guildford.



	Garden Suite	Chestnut	Acer	Drawing Room	Wine Room	Feathers	Ewhurst	Dunsfold	Chilworth	Bramley	Albury
Boardroom	32	18	10	24	~	~	14	10	12	14	16
Private Dining	80	25	12	40	8	12	~	~	~	~	~
Cabaret	45	16	8	30	~	~	~	~	~	~	~
U-Shape	30	18	12	26	~	~	12	12	12	10	16
Theatre	100	30	15	70	~	~	~	~	~	8	~



CLOCKWISE FROM TOP LEFT: *The Drawing Room, central staircase, Barnett Hill, 1905 Bar, main hallway, Master Suite*



GARDEN SUITE

CHESTNUT

ACER

DRAWING ROOM

EWHURST

DUNSFOLD

CHILWORTH

BRAMLEY

ALBURY

The largest meeting room with views onto the gardens to the side of the house. The Garden is air-conditioned, has natural daylight and is a great setting for larger conferences.

Located on the first floor, this meeting room is south facing, benefiting from natural daylight.

A first floor meeting room with views over the grounds. Can interconnect with the Chestnut Suite.

An attractive walnut-panelled room with beautiful period features. It is a particularly special setting for senior-level strategy meetings, exclusive corporate entertaining and AGMs.

Tucked away in the peaceful eaves at the top of the house on the second floor.

Located on the second floor with panoramic views of the surrounding countryside.

A small meeting room located on the second floor with panoramic views of the countryside.

A small meeting room located on the second floor with panoramic views of the countryside. Can interconnect with Albury.

A small meeting room located on the second floor with panoramic views of the countryside. Can interconnect with Bramley.

GARDEN SUITE

35ft x 23ft
10.7m x 7m

CABARET

up to 45 delegates

HOLLOW SQUARE
up to 32 delegates

BOARDROOM
up to 32 delegates

CLASSROOM
up to 40 delegates

THEATRE
up to 100 delegates

U-TABLES
up to 30 delegates

U-CHAIRS
up to 30 delegates

DINNER
up to 80 guests

CHESTNUT

24ft x 14.4ft
7.1m x 4.4m

CABARET

up to 16 delegates

HOLLOW SQUARE
up to 18 delegates

BOARDROOM
up to 18 delegates

CLASSROOM
up to 24 delegates

THEATRE
up to 30 delegates

U-TABLES
up to 16 delegates

U-CHAIRS
up to 18 delegates

DINNER
up to 25 delegates

ACER

15.5ft x 11ft
4.75m x 4.6m

CABARET

up to 8 delegates

HOLLOW SQUARE
up to 10 delegates

BOARDROOM
up to 10 delegates

CLASSROOM
up to 4 delegates

THEATRE
up to 15 delegates

U-TABLES
up to 8 delegates

U-CHAIRS
up to 12 delegates

DINNER
up to 12 delegates

DRAWING ROOM

29ft x 17ft
8.8m x 5.25m

CABARET

up to 30 delegates

HOLLOW SQUARE
up to 24 delegates

BOARDROOM
up to 24 delegates

CLASSROOM
up to 30 delegates

THEATRE
up to 70 delegates

U-TABLES
up to 16 delegates

U-CHAIRS
up to 26 delegates

DINNER
up to 40 guests

EWHURST

15ft x 12ft
4.6m x 3.7m

BOARDROOM

up to 14 delegates

U-CHAIRS
up to 12 delegates

DUNSFOLD

15ft x 12.4ft
4.6m x 3.8m

BOARDROOM

up to 10 delegates

U-CHAIRS
up to 12 delegates

CHILWORTH

18ft x 11.8ft
5.5m x 3.6m

BOARDROOM

up to 12 delegates

U-TABLES
up to 10 delegates

U-CHAIRS
up to 12 delegates

BRAMLEY

15.7ft x 12.5ft
4.8m x 3.8m

BOARDROOM

up to 14 delegates

THEATRE
up to 8 delegates

U-CHAIRS
up to 10 delegates

ALBURY

27ft x 12ft
8.2m x 3.6m

BOARDROOM

up to 16 delegates

U-CHAIRS
up to 16 delegates

Team Building

Barnett Hill is quite possibly the ideal location for team building activities, surrounded by gorgeous gardens and woodland, along with our little black book of suppliers, we've got something for everyone. From ice breakers to creative exercises, learning new skills as well as more traditional team building activities, we've got it covered. Here are a few of our favourites...



You'd be quackers not to give duck herding in the grounds a go...



An afternoon of croquet on the lawn perhaps? Why not accompany it with cream tea & Pimms... a lovely treat. There are plenty of other lawn games too...



A morning of clay shooting blows away the cobwebs, with flasks of coffee & treats



Meet the bees! Our expert beekeeper can give you a tour of hives, followed by a honey tasting and little insight into the world of the amber nectar...



The primordial power of gathering around fire - with a tot of something or two!



Need we say more? We love this snap of a team enjoying a wine tasting, which you can take as seriously (or not) as you please. We've plenty of grapes to try and our sommeliers know their stuff but can make a tasting great fun too.



A guided wellness walk through our woodland can be great to help bring stretched teams together. Take a deep breath, recalibrate and soak up the countryside.

We've plenty more ideas too, from treasure hunts to bike rides to Silent Pool Gin tastings. For any of these, or perhaps something else you have in mind, just contact our events team: bhsales@alexanderhotels.com

Langshott Manor

LADBROKE ROAD, HORLEY, SURREY RH6 8PB | WWW.LANGSHOTTMANOR.CO.UK

Langshott Manor dates back to 1580 making it our second Tudor-era property. Very much in the Elizabethan style, Langshott Manor is charming and characterful with warm, exposed original brickwork, wooden beams and roaring fireplaces. Now the hotel is home to twenty-two rooms and suites, four private hire spaces, our beautiful three-rosette restaurant The Mulberry as well as terraces overlooking the beautiful garden and original moat. More a house than hotel, Langshott Manor is our most ideal hotel for exclusive use and you can expect an especially warm welcome and to feel right at home. Langshott Manor is just five minutes from Gatwick Airport and under an hour to London Victoria from the Horley connection.



	Gallery	Boardroom	Mulberry
Boardroom	12	20	30
Private Dining	14	22	60
Informal	~	~	~
U-Shape	12	14	24
Theatre	10	25	60

CLOCKWISE FROM LEFT: *The Boardroom, one of the public lounges, Langshott Manor, afternoon tea, a Luxury king bedroom, rosetted cuisine in The Mulberry*



THE GALLERY



THE BOARDROOM



ST PETER'S



MULBERRY

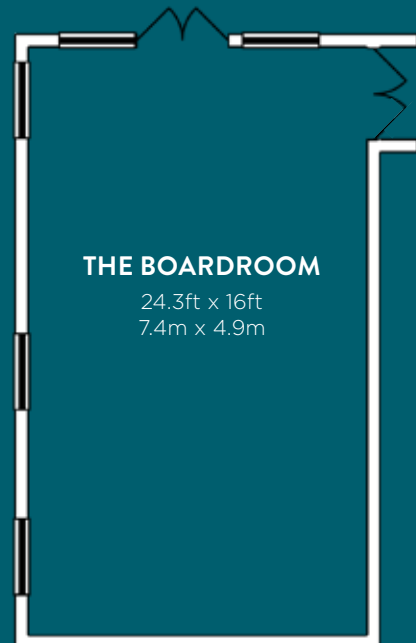
Perfectly formed traditional suite with views of the south gardens



THE GALLERY
 29.8ft x 14.5ft
 9.0m x 4.4m

- BOARDROOM**
up to 12 delegates
- CLASSROOM**
up to 12 delegates
- U-SHAPE**
up to 12 delegates
- THEATRE**
up to 10 delegates
- RECEPTION**
up to 30 delegates
- PRIVATE DINING**
up to 14 guests

Well-appointed with oak wall coverings and comfortable seating. The room overlooks the hotel's medieval moat and offers access to a private deck with outdoor seating.



THE BOARDROOM
 24.3ft x 16ft
 7.4m x 4.9m

- BOARDROOM**
up to 20 delegates
- CLASSROOM**
up to 16 delegates
- U-SHAPE**
up to 14 delegates
- THEATRE**
up to 25 delegates
- RECEPTION**
up to 25 delegates
- PRIVATE DINING**
up to 22 guests

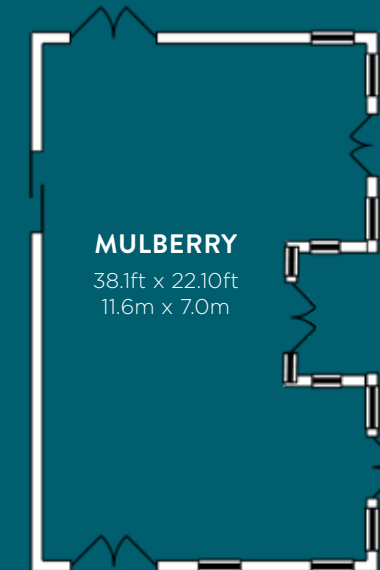
Situated in the oldest part of the 16th century house, featuring an open log fireplace, oak beams, views of the manicured grounds and an original door leading onto the terrace.



ST PETER'S
 19.2ft x 14.8ft
 5.8m x 4.5m

INFORMAL SEATING ONLY
 up to 16 delegates

An inspirational setting with windows denoting an entire side of the room for maximum sunlight.



MULBERRY
 38.1ft x 22.10ft
 11.6m x 7.0m

- BOARDROOM**
up to 30 delegates
- CLASSROOM**
up to 20 delegates
- U-SHAPE**
up to 24 delegates
- THEATRE**
up to 60 delegates
- PRIVATE DINING**
up to 60 guests

Team Building

An oasis in the suburbs of Surrey, Langshott Manor is surrounded by acres of pretty gardens, and along with our little black book of suppliers, we have plenty of great team building solutions. From ice breakers to creative exercises, learning new skills as well as more traditional team building activities, there's something for every team to enjoy. Here are a few of our favourites...



You'd be quackers not to give duck herding in the grounds a go...



An afternoon of croquet on the lawn perhaps? Why not accompany it with cream tea & Pimms... a lovely treat. There are plenty of other lawn games too...



The primordial power of gathering around fire - with a tot of something or two!



Need we say more? We love this snap of a team enjoying a wine tasting, which you can take as seriously (or not) as you please. We've plenty of grapes to try and our sommeliers know their stuff but can make a tasting great fun too.

We've plenty more ideas too, from treasure hunts to bike rides to Nyetimber tastings. For any of these, or perhaps something else you have in mind, just contact our events team: imsales@alexanderhotels.com

Meetings & Events
at
THE ALEXANDER HOTEL
Collection

www.alexanderhotels.co.uk

For more information, menus and floor plans please contact
the property directly below -

Sophie Trendell-Allen

ALEXANDER HOUSE - AHSales@alexanderhotels.com

Andrew Allen-Simpson

GREAT FOSTERS - GFSales@alexanderhotels.com

Harry Jarvis

ROWHILL GRANGE - RGSales@alexanderhotels.com

Gemma West

BARNETT HILL - BHSales@alexanderhotels.com

Sophie Trendell-Allen

LANGSHOTT MANOR - LHSales@alexanderhotels.com



AH

ALEXANDER HOTELS
COLLECTION