



GREAT FOSTERS
Historic Hotel & Gardens



GREAT FOSTERS

Historic Hotel & Gardens

One of the most important historic buildings in the UK, Great Fosters is steeped in Tudor history. This magnificent boutique hotel has acres of glorious gardens (ideal for team building), 56 rooms & suites, 7 private hire spaces, a Cocktail Bar, Painted Hall Bar, several terraces with a wood fired pizza oven and much more - including a Saxon moat and grassed amphitheatre! The hotel accommodates up to 120 guests theatre style in the ancient Tithe Barn. Smaller meetings are perfectly suited to the self contained Coach House which includes three ground floor meeting spaces, spacious lounge and walled garden.

Stroude Road, Egham, near Windsor, TW20 9UR | www.greatfosters.co.uk



GREAT FOSTERS

Historic Hotel & Gardens

Steeped in Tudor history and set in acres of exquisite gardens, Great Fosters is a stone's throw from London Heathrow and 40 minutes from London Waterloo.

Stroude Road, Egham,
near Windsor, TW20 9UR
www.greatfosters.co.uk



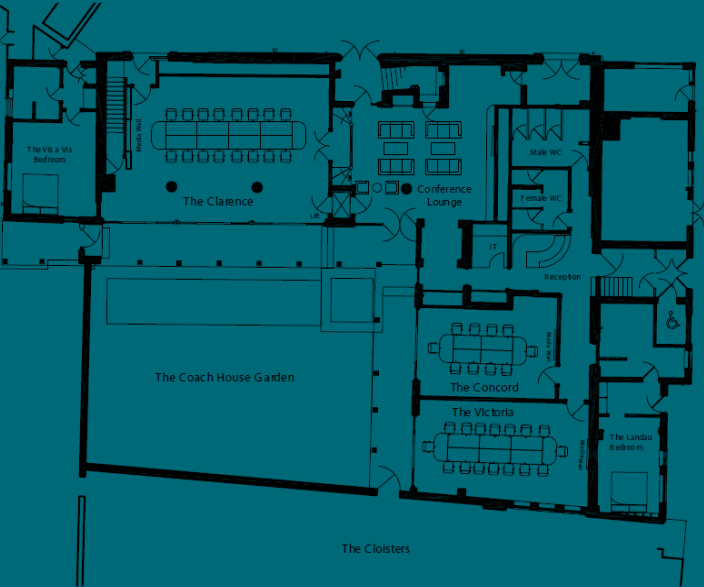
Clockwise from left: The Tithe Barn, the Clarence, the Mowbray and the Orangery

ROOM CONFIGURATION AND CAPACITY

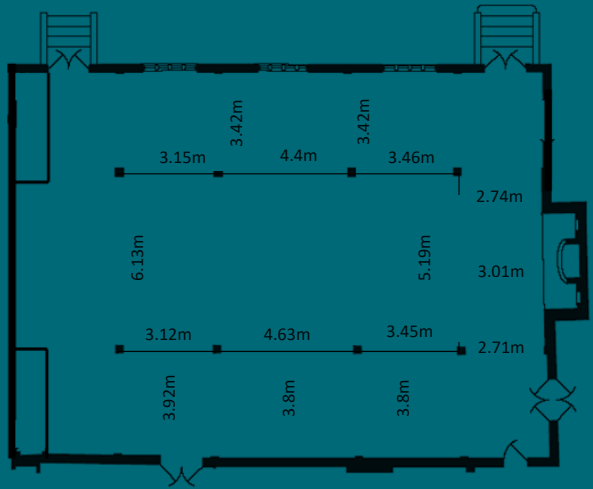
Configuration	Tithe Barn	Orangery	Mowbray	Mandeville	Clarence	Victoria	Concord
Boardroom	40	40	20	8	22	16	10
Private Dining	180	80	24	8	-	-	-
Cabaret	42	48	15	-	-	-	-
U-Shape	40	40	20	-	22	16	10
Theatre	120	120	30	-	30	-	-

ROOM OPTIONS IN MORE DETAIL

THE COACH HOUSE



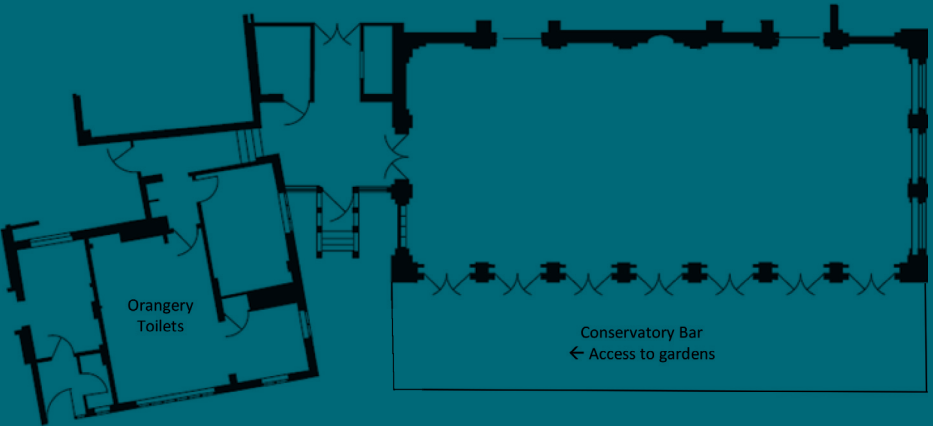
TITHE BARN EVENT SPACE



THE MOWBRAY & MANDEVILLE



THE ORANGERY





Croquet



Clay shooting



Team Building

Set in 55 acres of the most extraordinary gardens and grounds, and with our little black book of suppliers, we have plenty of great team building solutions. From ice breakers to creative exercises, learning new skills as well as more traditional team building activities, there's something for every team to enjoy.

Contact our events team to discuss your requirements:
gfsales@alexanderhotels.com



Honey tasting experience



Campfire gatherings



Duck herding